



PARALLEL ...a division of Pushpa Textile

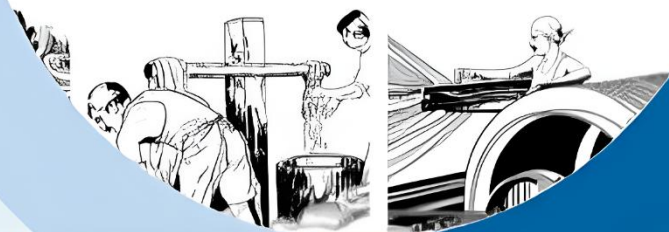


From Yarn To Fabric

Pushpa

TEXTILE

— est. 1975 —



Quality Textiles & Clothing Solutions

*Manufacturer & Exporter of Quality Fabric and Branded Apparels*



# About Pushpa Textile

Puspha Textile’s healthcare product line is dedicated to enhancing the patient care experience through quality and comfort. We offer a robust range of medical scrubs, patient gowns, and hospital linens that adhere to strict quality assurance standards. Crafted from premium cotton percale with thread counts ranging from 100 to 300, our bedding linen provides a soft, firm, and smooth touch—ensuring both durability and comfort.

Our clientele includes some of the most prominent hospitals, who trust us for delivering not just products, but a quality experience that reflects our belief: “It’s all about the quality of experience.”

Our Clients :



# About Our Products

UNIFORMS

## Hospital & Healthcare



*Outfit medical staff, patients, administrative staff, housekeeping, security with comfortable and keen uniforms that compliments your establishment.*



### Plain Bedsheets

Colors: As per requirement

Fabric: 100% Cotton 120 TC(20 x 20), 180 TC(40 x 40), 300 TC(60 x 60), Polycot(15D x 22S)

Size(in inches): 60 x 90, 60 x 100, 70 x 110



### Bath Towel

Colors: White, Pearl White, Blue, Grey, Ivory  
Camel, Brown, Maroon, Green, Turquoise

Fabric: 100% Cotton, Cotton/Polyester Blend

Pattern: Plain

### Quilt Covers

Colors: As per requirement

Fabric: 100% Cotton (40 x 40) 210 TC

Pattern: Plain, Stripe 1cm, Stripe 3 cm



### Hand Towel

Colors: White, Pearl White, Blue, Grey, Ivory  
Camel, Brown, Maroon, Green, Turquoise

Fabric: 100% Cotton, Cotton/Polyester Blend

Pattern: Plain



### Pillow Covers

Colors: As per requirement

Fabric: 100% Cotton 120 TC(20 x 20), 180 TC(40 x 40), 300 TC(60 x 60), Polycot(15D x 22S)

Size(in inches): 16 x 24



### Face Towel

Colors: White, Pearl White, Blue, Grey, Ivory  
Camel, Brown, Maroon, Green, Turquoise

Fabric: 100% Cotton, Cotton/Polyester Blend

Pattern: Plain

### Blankets

Colors: White, Camel, Dark Brown, Purple,  
Dark Grey, Green, Ivory, Light Grey,  
Maroon, Olive

Size(in inches): 58 x 88, 86 x 74

Fabric: Single / Double Side Anti-Pill Fleece



### Solapur Chaddars

Fabric: 100% Cotton

Weight (in gms): 1000, 1125, 1350

Pattern: Jacquard Designs





Doctor's Scrub Suit  
Colors: As per requirement  
Fabric: Cotton, Polyester, Spun  
Pattern: Customized



Patient Uniforms  
Colors: As per requirement  
Fabric: Cotton, Polyester  
Pattern: Customized

Apron (Unisex)

Colors: As per requirement  
Fabric: Cotton, Polyester  
Pattern: Half/Full Sleeves, Full/Knee Length



Baby Collection

Collection: Wrapper, Baby Kit, Mosquito Net  
Baby Patient Dress  
Colors: As per requirement  
Fabric: Cotton  
Pattern: Customized



OT Uniforms  
Colors: As per requirement  
Fabric: Cotton, Polyester  
Pattern: Customized



Admin Staff Uniforms  
Colors: As per requirement  
Fabric: Cotton, Polyester  
Pattern: Customized

Nurse Uniforms

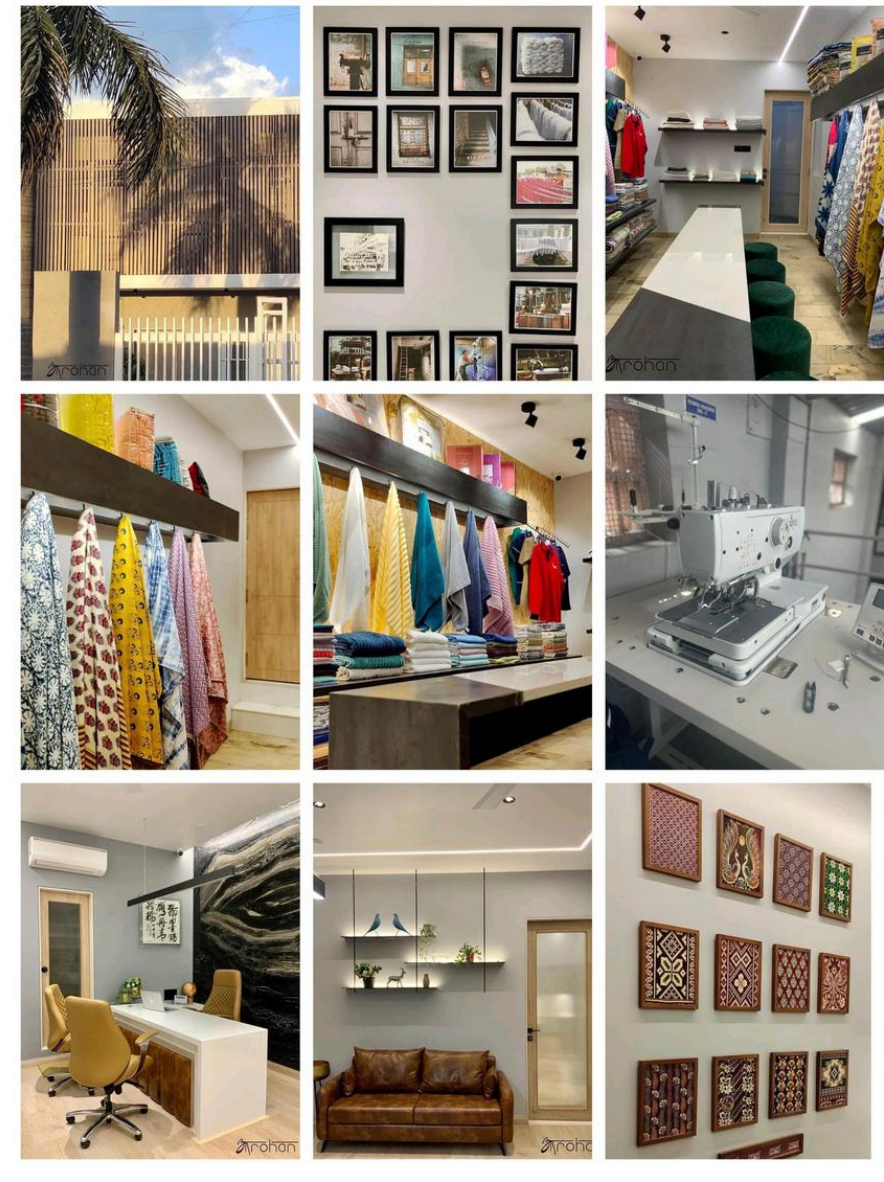
Colors: As per requirement  
Fabric: Cotton, Polyester  
Pattern: Customized



Housekeeping Uniforms

Colors: As per requirement  
Fabric: Cotton, Polyester  
Pattern: Customized





# The Factory

Inside Views

# Our Team

Meet the team that makes magic happen



**SURESHCHANDRA RATHI**

As the Founder of Pushpa Textile, his hard- work and dedication towards quality is unmatched. Always ahead of his times, his vision has transformed the traditional power handlooms factory and expanded them into the present modern stitching unit.



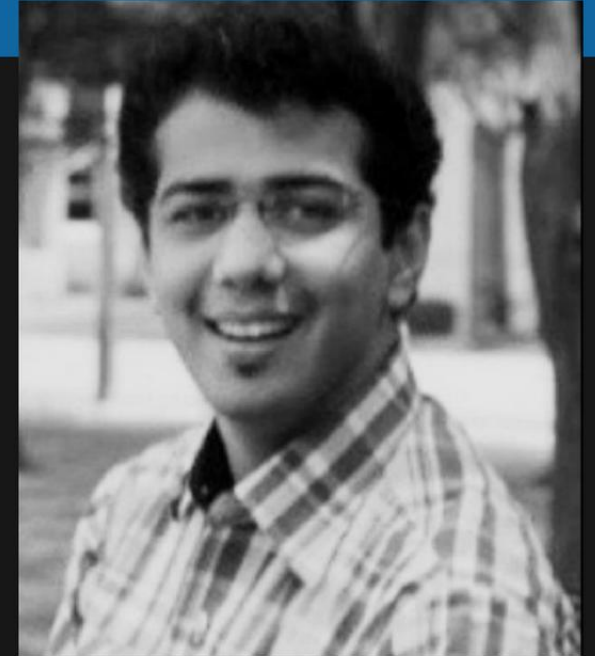
**PRASHANT RATTHI**

The man behind creating the Brand Pushpa Textile & now Parallel, has extended the Garment division of the firm. An MBA from Sydney & a Symbiosis Graduate, he aims to propel parallel as a market leader. Quality and Speed are his mantra.



**SAPNA RATHI**

With Innovative ideas & excellent skills she executes ground operations & creates sustainable processes in-house. An MBA graduate with experience of working with ISO processes of IT companies, makes her a great taskmaster.



**PANKAJ RATHI**

A graduate from VJTI Mumbai as Gold Medalist in Textile Engineering. After receiving a Masters in Textiles & Supply Chain from Cornell University, NY he is Currently based in Houston, Texas & manages our overseas operations.

# Get in Touch



155/4A/3. Old Akkalkot  
Naka, Solapur - 6 (M.S.) India



2903 Rutherford Place Ct,  
Katy TX (USA) - 77494



P A R A L L E L

## Phone

+91-8459847124 /  
+91-9923173456

## Email

[info@pushpatextile.com](mailto:info@pushpatextile.com)

## Website

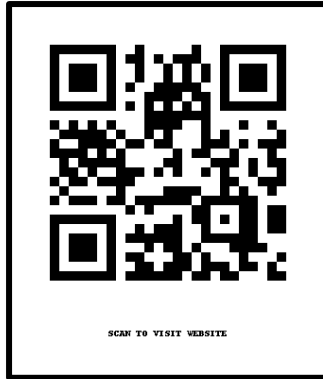
[www.pushpatextile.com](http://www.pushpatextile.com)

# VISIT OUR WEBSITE



[www.pushpatextile.com](http://www.pushpatextile.com)

or Scan Me!



*For more details, please contact*  
Mr. Prashant Ratthi

Ph. : (+91) 9923173456

Ph. : (+91) 8459847124

Email: [info@pushpatextile.com](mailto:info@pushpatextile.com)

Follow us:

[Instagram](#) | [LinkedIn](#) | [Facebook](#)

